

Korea Friendship Trail: Stinchcombe Hill



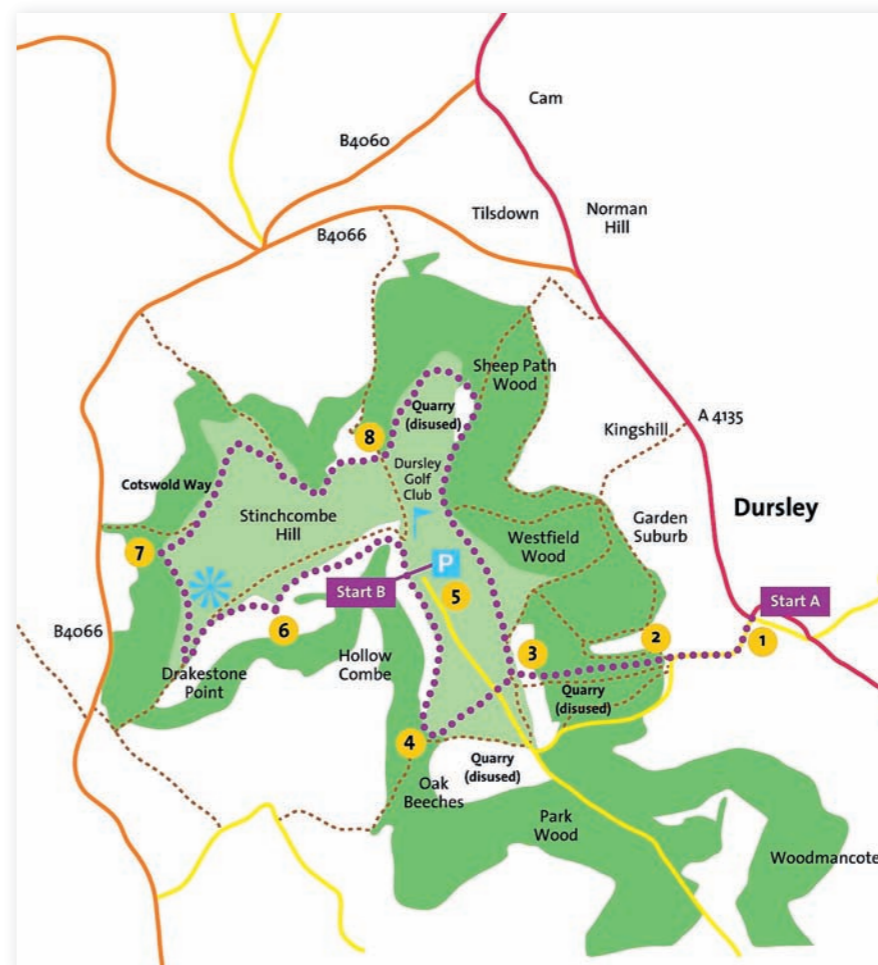
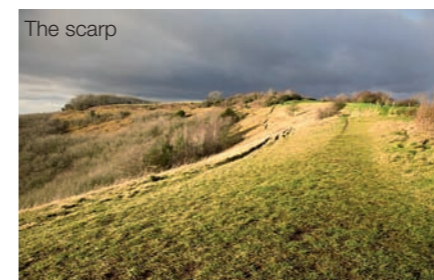
Whether you want to start in Dursley and make the steep climb up Stinchcombe Hill, or would prefer the less strenuous option of starting at the car park on the top, this lovely walk from the Cotswold Conservation Board – twinned with a walking route in Korea – takes in some of the most beautiful parts of the Cotswold Way

Distance: Start A: 3½ miles (Start B: 3 miles)
Time: 2-2½ hours (1½-2 hours)
Difficulty: Moderate – firm surface, no stiles, one long steep ascent / descent (Easy – firm surface, no stiles, mostly level)
Public transport: Start A easily accessible by bus and train (Cam and Dursley Station). Visit www.traveline.org.uk or call 0871 200 2233.
Location: Dursley: Grid reference SO 754 981, OS Explorer 167). Postcode GL11 4JQ
 Stinchcombe Hill: SO 744 983. GL11 6AQ
Refreshments: Many excellent places to eat and drink in Dursley.



Experience one of the most beautiful meanderings of the Cotswold Way, and discover a new world of walking on an island five thousand miles away...

View across the River Sever



Start B: If you prefer to travel by car and do not fancy the steep climb up from Dursley, start the walk at the car park in the centre of the hill (see grid reference and postcode above). Picking up the route at point 5, simply follow the signs clockwise all the way round the hill. Ignoring the route back to town, you will eventually end up back where you started.

After a well-earned rest, spare a few minutes to consider how walking can bring people and landscapes together the world over, and how the experience is essentially the same whether you walk in the Cotswolds or Korea. Better still, follow the links from the Friendship Trail page on the Cotswold Way website and take a virtual tour of Jeju Olle – this wonderful trail is waiting to welcome you! In the meantime, let your walk always remind you that there is a corner of a foreign field that will remain forever Cotswolds...

JEU OLLE is a series of walking routes on Jeju Island, 130km off the southwest coast of Korea. This beautiful UNESCO World Heritage Site is almost sub-tropical in climate, its scenery passing from windswept coastline, through countless tangerine groves criss-crossed by distinctive stone walls, and up to the 6,400-foot peak of Hallasan.

This Cotswold Way circular walk is twinned with route 3 of the Jeju Olle Trail as a mark of friendship and international cooperation between our two countries. There are many similarities between the two routes and it is hoped that teaming up in this way will promote understanding and tourism on both sides.

Following the Friendship Trail could not be simpler as it keeps to the Cotswold

Way for its entire length. To make it even easier, a special marker disc (see picture) has been added to selected Cotswold Way posts to mark the Friendship Trail and guide you round the route.

Start A: If you choose to start from Dursley, pick up the signs for the Cotswold Way on the corner of May Lane and Hill Road near the library and across the road from the excellent Old Spot Inn.

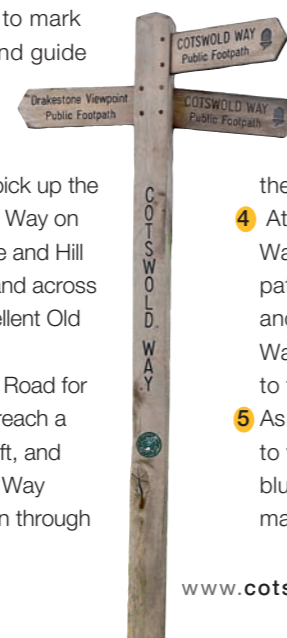
2 Head steeply up Hill Road for 200 yards until you reach a sharp bend to the left, and follow the Cotswold Way fingerpost straight on through

the kissing gate into the woods (Point 2)

3 Carry straight on steeply up the track, until you emerge out onto Stinchcombe Hill next to a fingerpost between the golf clubhouse and car park. At this point, the Cotswold Way splits in two. Ignoring the route to the right, follow the signs straight on across the golf course.

4 At the next fingerpost, the Cotswold Way once more splits in two. Ignore the path straight on through the woods, and continue to follow the Cotswold Way and Friendship Trail signs around to the right.

5 As breathtaking views begin to open up to your left, you will come upon a small blue sign next to a Cotswold Way marker post at the side of the car park.



For further information on enjoying and exploring the Cotswolds Area of Outstanding Natural Beauty, including a range of downloadable walking routes, go to: www.escapetothecotswolds.org.uk

For more public transport information pick up a copy of Explore the Cotswolds by Public Transport and accompanying timetable booklets, available at Tourist Information Centres and downloadable from www.cotswoldsaoib.org.uk

Cotswolds Conservation Board,
 Fosse Way,
 Northleach, GL54 3JH
 Tel: 01451 862000
 Email: info@cotswoldsaoib.org.uk

